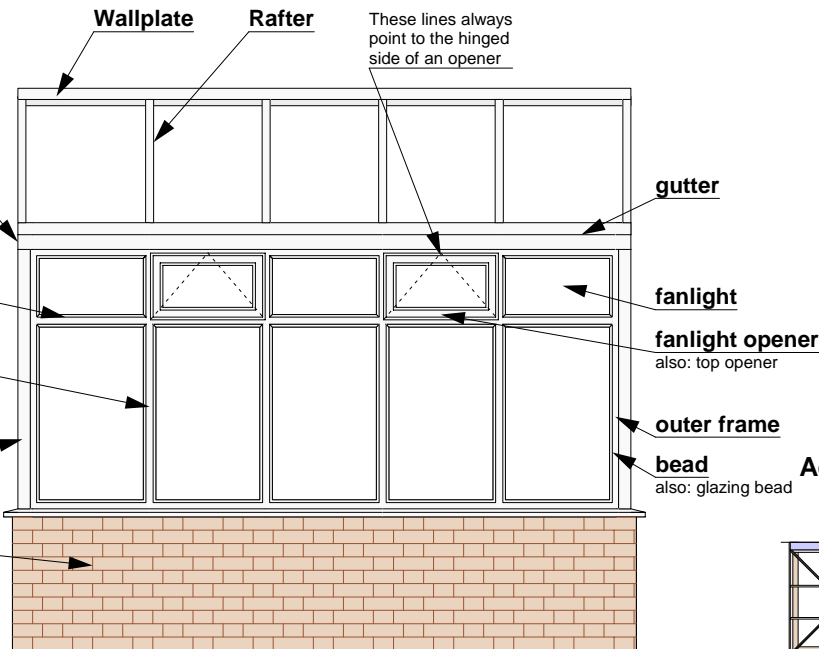
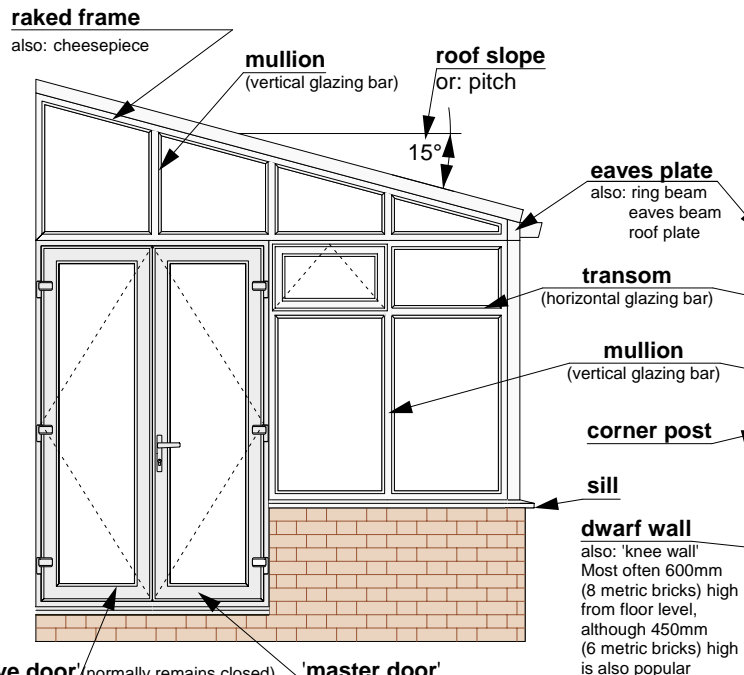
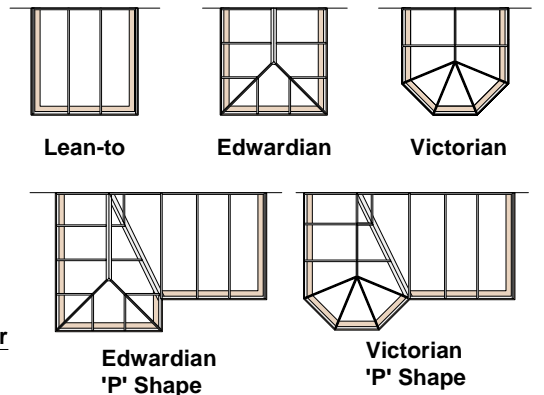


# Glossary of Conservatory Terms

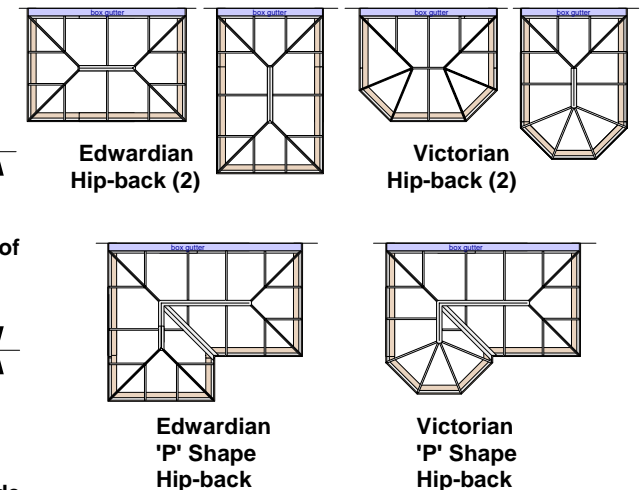


## Basic Conservatory Plan Arrangements



## Additional Conservatory Plan Arrangements

especially for attachment to a single storey ie bungalows and single storey extensions



Many other plan arrangements are regularly designed by Ascot & Yorke. Further details available on request.

## The Relevant British Standards

<b>Double Glazing:</b>	<b>uPVC frames:</b>
BS 5713	BS 7413
BS 6262	<b>Roofs:</b>
BS 6206	BS 6399



Online Conservatories Direct To Your Home

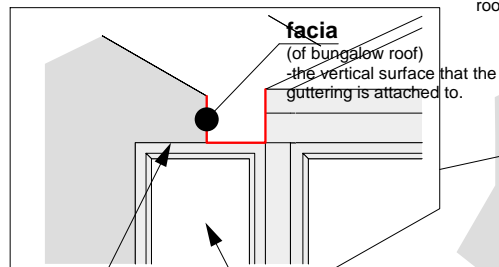
**'slave door'** (normally remains closed)

**'master door'**  
(first to open as a pair of french doors)  
NB The one with the handle

**hip-back roof**  
A roof that returns down to eaves level, usually to enable a conservatory to be connected to a bungalow or flat roof extension with a box gutter.

**finial**

**cresting**



**soffit**  
(underside, horizontal surface produced by a roof overhang)

NB. The area under the 'soffit' and the 'box gutter' can be made up with either a **glazed frame**, OR **brickwork**.

**d.p.c.** (damp proof course) a usually black, waterproof membrane, placed between 2 courses of bricks at floor level. The DPC usually overlaps the **d.p.m.** (damp proof membrane) which is a usually thick, polythene, waterproof membrane layed under the entire floor area.

**strip foundations**  
details supplied with every order

**Floor level**  
also: **FFL** (finished floor level)

**Ground level also GL**

**base**  
(builder's work)

